



## Navis Ship Management

---

↓ Chartering

↓ Crewing

↓ Commercial

↓ Operations

↓ Training

↓ Technical

# Committed to Excellence



**NAVIS  
SHIP MANAGEMENT**

[navis.eu](http://navis.eu)



**BUREAU  
VERITAS**  
**SOLUTIONS**  
Marine & Offshore

Comprehensive ship management solutions designed to enhance customers' business competitiveness.

## Crew Management

With over 20,400 experienced offshore personnel available, Navis maintains one of the largest pools of highly qualified and dedicated seafarers to meet the demanding requirements of their roles which are supported by shore based personnel.

Our owned network covering utmost populated by professional seafarers countries of Europe, which is ranked 2nd in the world Top Five, allows us to maintain close contact with seafarers and manage the recruitment and manning process at the highest standard in the industry.

Structured training and development programmes ensure that crew skills and knowledge are continuously updated in line according the changing legislation and industry demands environment.

## Commercial Management

Activities are focused on competitive chartering and commercial management, including negotiating and concluding periodic charters for all types of vessels, sale and purchase of second-hand vessels, and placement of newbuilding contracts.

Continuous analysis of market trends and a close watch on emerging opportunities allow us to offer timely and reliable advice.

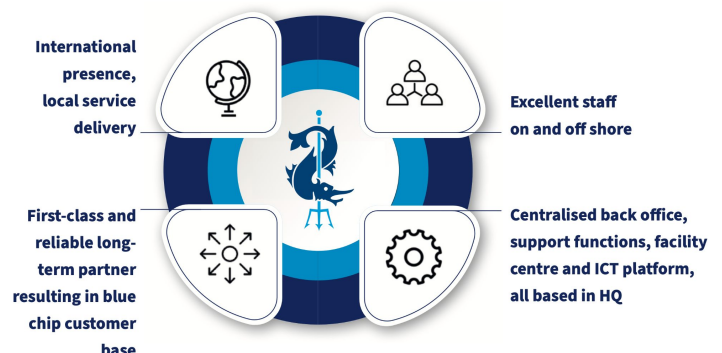
## Technical Management

Safe, efficient, and compliant vessel and cargo management designed to maximize uptime and prevent losses, delivered through:

- Seamless collaboration between onboard crews and expert shore-based teams.
- Advanced planned maintenance and procurement systems.
- Integrated ship management software providing transparent, secure access to operational, technical, and financial data.

## Our Expertise

Highly experienced sea and shore based professionals, fully equipped to meet owners' and charterers' requirements across a wide range of commercial.



**“Driven by the dedication of over 700 onboard professionals, powering everything we achieve”**



## Index

01 Anchor Handling and Towing Operations

---

02 Subsea Construction

---

03 Crane Operations

---

04 Walk-to-Work

---

05 Energy Efficiency

---

06 Conventional Offshore

---

07 Wind Energy

---



## Anchor Handling and Towing Operations

We provide both traditional rig moving operations and associated anchor handling, as well as offer project management for floating facility tow and mooring projects with a strong focus on safety and fuel efficiency.



## Subsea Construction

With project management capabilities and versatile subsea support vessels - featuring a large deck and onboard work-class ROVs that can be launched via moon pool and over the side - we provide full-scope solutions for subsea construction projects.

# Crane Operations

Vessels are equipped with advanced active heave compensated electric cranes suitable for a wide range of operations such as lifting large subsea infrastructure, with a hook height of 26 metres.

**200 t**

Lifting capacity



## Walk-to-Work

We provide custom solutions for walk-to-work and accommodation in diverse offshore environments. The high station keeping and power management abilities of the managed vessels allow for an increased operational window.



**238 person**  
Accommodation capacity



## Energy Efficiency

As committed vessel operator, Navis prioritizes energy efficiency to meet both customer expectations and environmental responsibilities. We are actively enhancing energy performance and minimizing fuel consumption through strategic technical upgrades, advanced digitalization, and fostering a culture of energy-conscious practices.

## Conventional Offshore

With more than 14 Years of offshore experience, we support the oil and gas industry from field development to decommissioning.



## Wind Energy

Through a dedicated SOV/SCOV expertise, Navis supports its customers in various areas such as integrated solutions and marine services for the installation and maintenance of floating wind projects.



- Z ONSHORE MAINTENANCE
- Z PRELIMINARY WIND FARM DESIGN

- HARBOUR LOGISTICS:
- Z SEA FREIGHT (WIND TURBINES PARTS) SHIPS
  - Z LIFTING
  - Z MOBILIZATION
  - Z MARINE SHORE COORDINATION CENTER
  - Z LOGISTIC & FACTORY ACCEPTANCE TEST

MOORING & QUAYSIDE ENGINEERING

SELF PROPELLED BARGE

OFFSHORE CABLE, INSTALLATION, MAINTENANCE & REPAIR

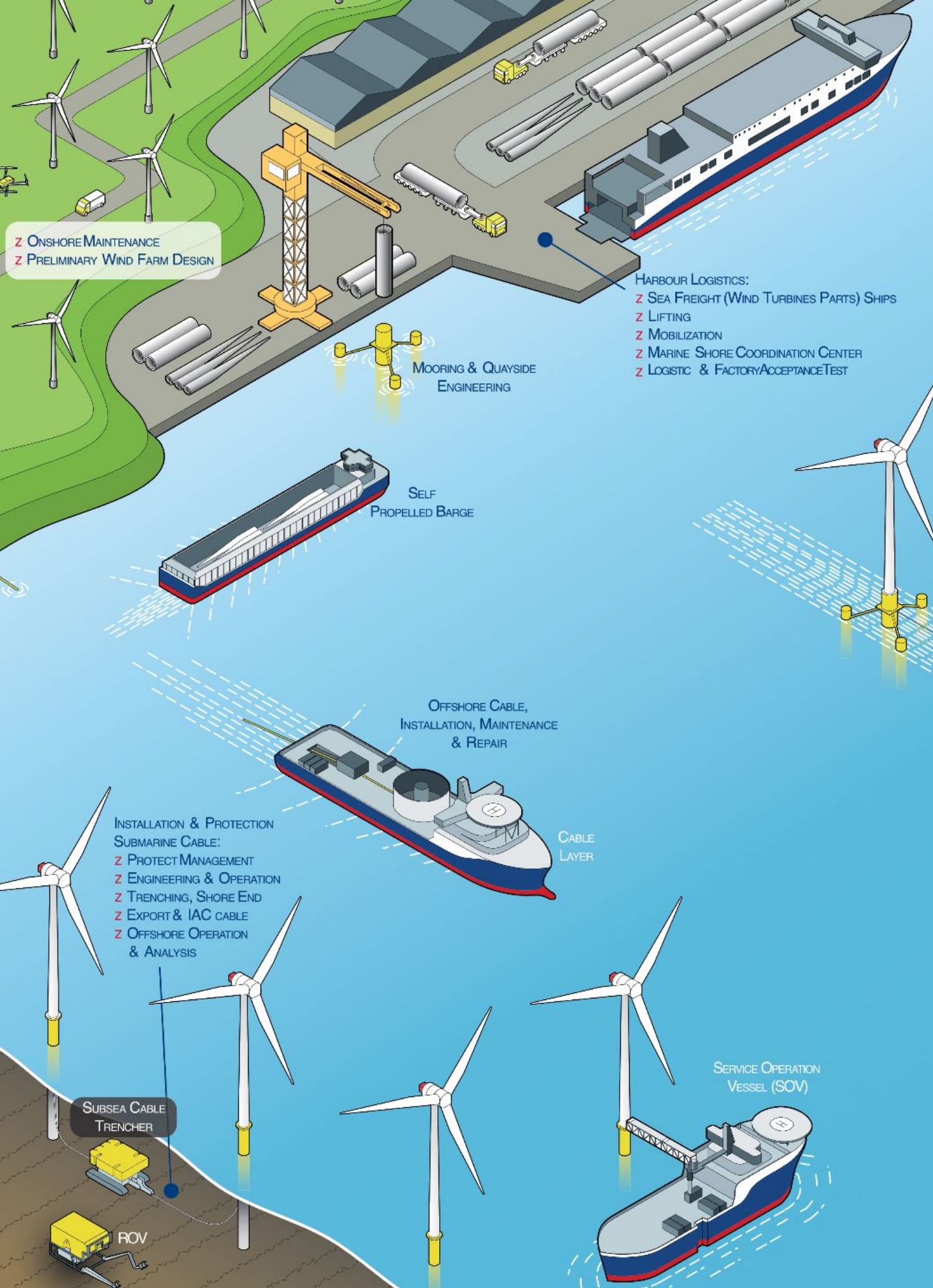
CABLE LAYER

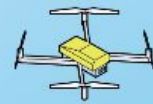
- INSTALLATION & PROTECTION SUBMARINE CABLE:
- Z PROTECT MANAGEMENT
  - Z ENGINEERING & OPERATION
  - Z TRENCHING, SHORE END
  - Z EXPORT & IAC CABLE
  - Z OFFSHORE OPERATION & ANALYSIS

SERVICE OPERATION VESSEL (SOV)

SUBSEA CABLE TRENCHER

ROV





MARINE  
DRONE SYSTEM

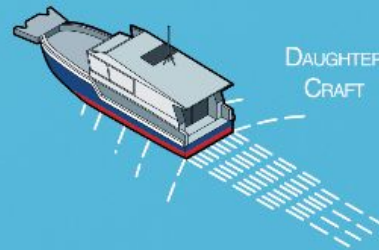


TOWING ENGINEERING & OPERATION:

- Z TOWING MANUAL & DESIGN
- Z SHIP CHARTERING
- Z TOWING ANALYSIS
- Z PROJECT MANAGEMENT
- Z OFFSHORE PERSONNEL PROCUREMENT

OPERATION & MAINTENANCE:

- Z CTV, DAUGHTER CRAFT OPERATIONS
- Z SOV DESIGN
- Z BIG DATA ANALYSIS TO DETERMINATE OPTIMAL MAINTENANCE SOLUTION
- Z OFFSHORE PERSONNEL & OPERATION
- Z SHIP MANAGEMENT
- Z FRENCH HIGHEST USE STANDARD



DAUGHTER  
CRAFT

FLOTATION WIND FARM

HOOK UP ENGINEERING :

- Z PROJECT MANAGEMENT
- Z ENGINEERING & OPERATION
- Z INSTALLATION METHODOLOGY
- Z HOOK UP ANALYSIS
- Z SUBSEA EQUIPMENT DESIGN
- Z OFFSHORE OPERATION

ANCHOR & MOORING

LINES INSTALLATION:

- Z MOORING LINE ENGINEERING
- Z CONSULTING & OPTIMIZATION
- Z INSTALLATION ENGINEERING & OPERATION



CREW TRANSFER  
VESSEL (CTV)

## Fleet Capabilities

As a global marine solutions provider, Navis manages a diverse fleet of vessels which support a wide range of offshore operations. Operating vessels' capabilities range from the workhorses of the industry such as Anchor Handling Tug Supply (AHTS) and Platform Supply Vessels (PSVs), to Multi Purpose Support Vessels (MPSV) encompassing Diving Support Vessels (DSV) and Commissioning Service Operation Vessels (CSOV) serving the offshore wind industry.

↓ **Anchor Handling Tug Supply**

---

↓ **Platform Supply Vessels**

---

↓ **Multi-purpose Support Vessels**

---

↓ **Accommodation & Maintenance Support Vessels**

---

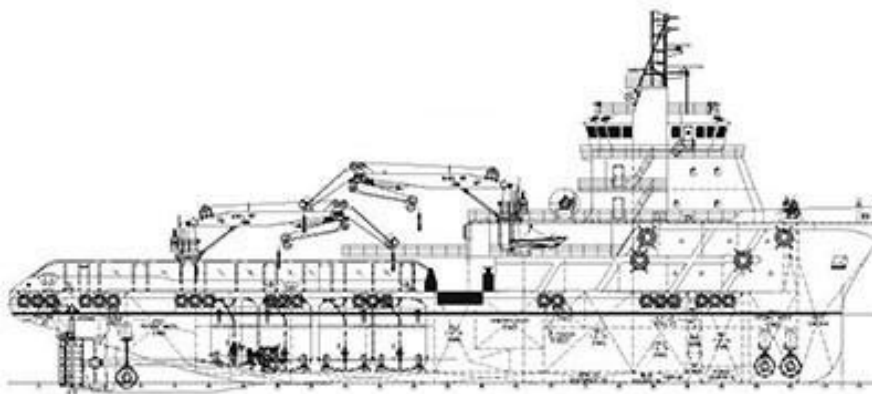
↓ **Diving/ROV Support Vessels**

---

# Anchor Handling Tug Supply

Versatile offshore support vessels capable of a range of offshore operations including:

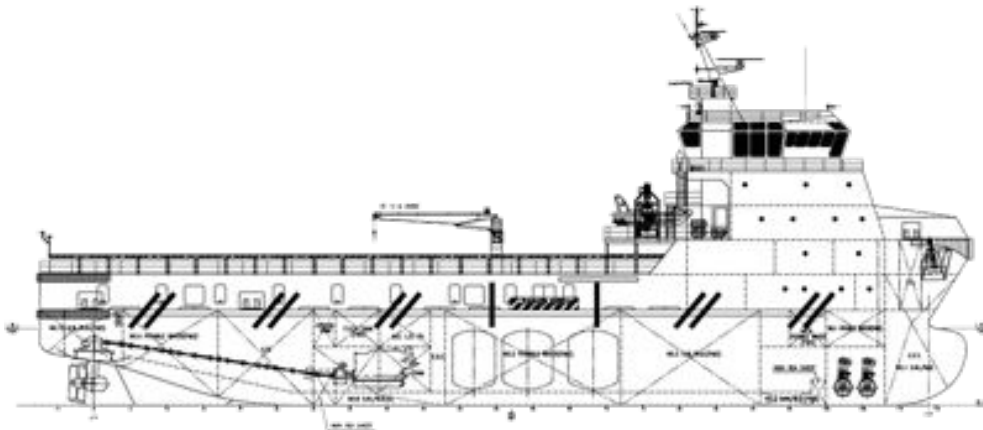
- Towing of drilling rigs, construction vessels and other type of vessels
- Anchor handling for permanent and temporary mooring
- Resupply of platforms and other offshore vessels



BHP	DP	Bollard Pull (Tons)	LOA	Clear Deck Area (m2)	No. Of Pax	Year Built	Class
25,126	2	278	95m	500	74	2000	DNV
5,220	2	66	59m	350	42	2010	ABS

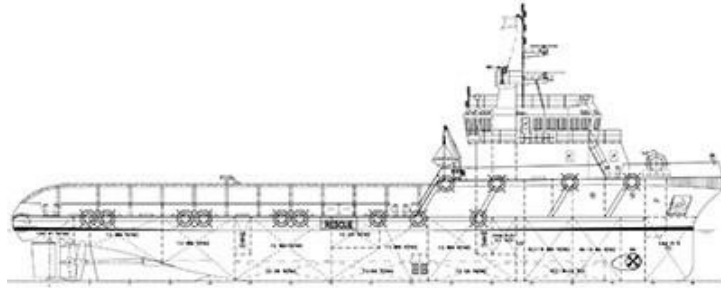
## Platform Supply Vessels

Equipped to supply drilling and production platforms with fuel, water, dry bulk and other supplies required for operations. These vessels feature generous clear deck spaces and can also be utilised for pipe transport and deck cargo as well as ROV operations.



DWT	BHP	DP	LOA	Clear Deck Area (m2)	Cargo Capacity - Fuel/F.W/ D.Bulk/Mud (m3)	No. Of Pax	Year Built	Class
4,312	21,456	2	93,45	1,075	1165/1049/335/450	46	2005	BV
3,326	8,020	2	73,60	680	837/447/319/594)	22	2007	DNV

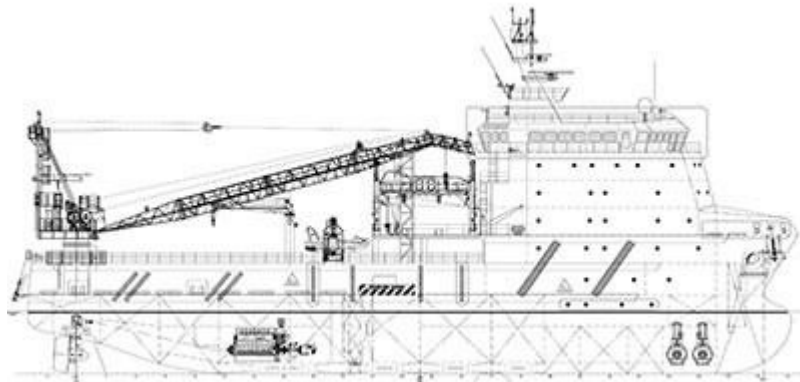
## Commissioning Service Operation Vessel



GRT	BHP	DP	LOA	Clear Deck Area (m2)	W2W	No. Of Pax	Year Built	Class	Specific Capabilities
6000	9,650	2	87,70	500	SMST 3D MCG 30m	120	2025	CRS	3D MCC SWL 10t, ESS, IWS, LCS, SCR

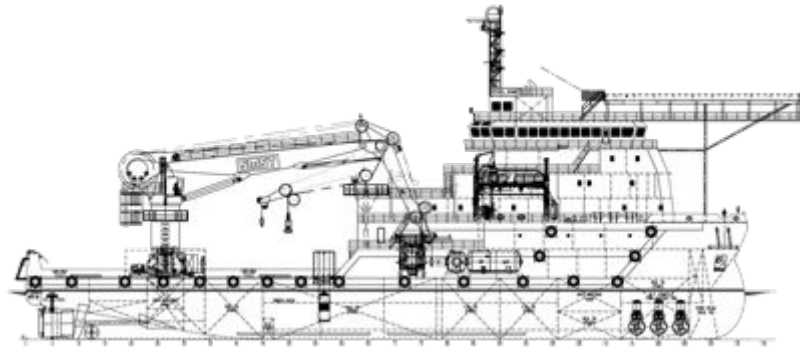
## Accommodation & Maintenance Support Vessels

Includes a variety of manoeuvrable self-propelled vessels for accommodation and maintenance operations.



BHP	DP	LOA	Mooring Config	Clear Deck Area (m2)	Crane	No. Of Pax	Year Built	Class	Specific Equipment
6,000	2	85	4pt	635	100t	238	2015	BV	Gangway 6m, Helicopter Facility

# Diving/ROV Support Vessels



BHP	DP	Sat Dive Capacity	LOA	Clear Deck Area (m2)	No. Of Pax	GRT	Class	Specific Equipment
17,130	3	Sat D 300 msw, Air Dive, ROV	111.4	1,113	147	9,158	BV	AHC 200t@26 m, Moonpool, 4pt mooring